

Attachment B



CAMPUS MASTER PLAN 2025-35 UPDATE

SECOND PUBLIC HEARING 12/05/24

Agenda

1. Introductions
2. Public Comment Rules of Order
3. Statute/Regulation/Jurisdiction
4. Format
5. Approach
6. Content Updates
7. Summary of Comments
8. Schedule
9. Public Comments
10. Conclusion



Rules of Order / Public Comment Process

1. All speakers must complete a comment card and sign the speaker roster.
2. All speakers must be signed in prior to the start of the public comment period.
3. Each speaker will be given three (3) minutes.
4. When presenting, state your name, address, and affiliation before beginning your comment.
5. Hold all comments and questions until after the presentation.

Statute / Regulation

- Florida Statute 1013.30
- Board of Governors Regulations, Chapter 21

Elements

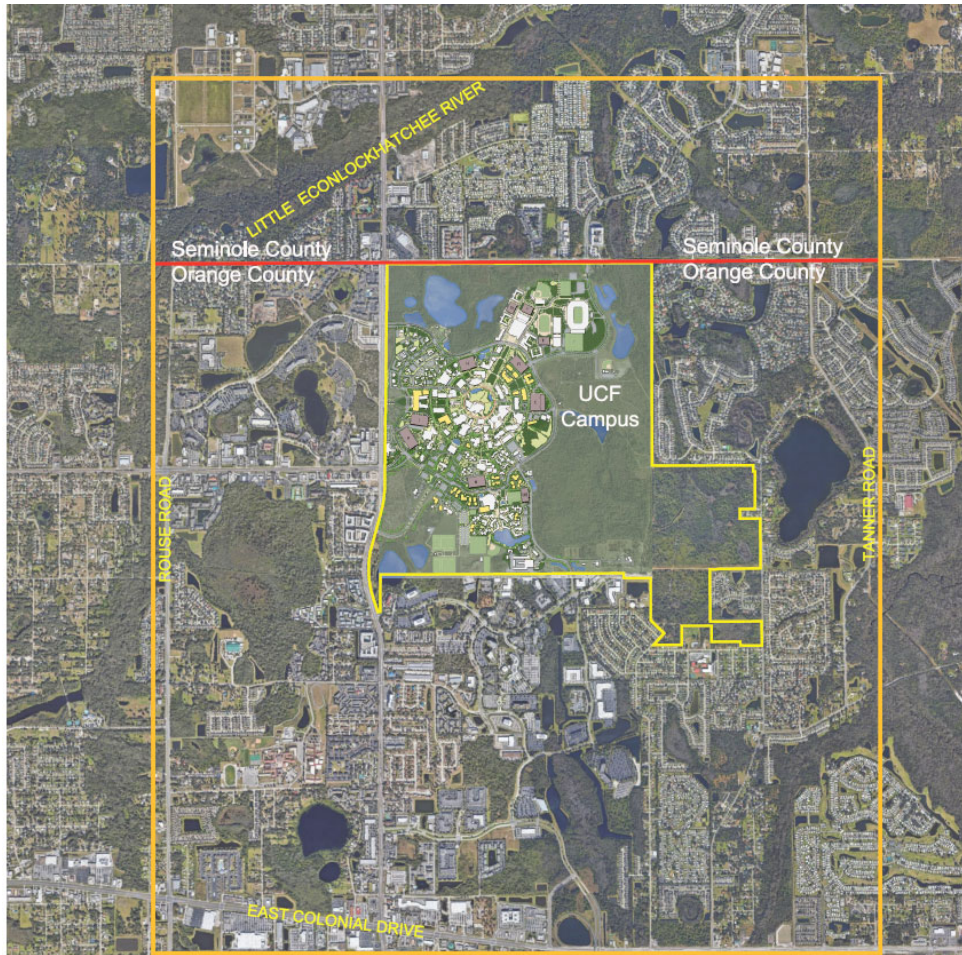
Introduction

1. Future Land Use
2. Transportation
3. Housing
4. General Infrastructure
5. Conservation
6. Recreation and Open Space
7. Intergovernmental Coordination
8. Capital Improvements

Evaluation and Appraisal Report

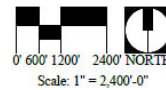


INTRODUCTION



- County Boundary
- Study Boundary
- UCF Campus Boundary

JURISDICTION **of the** **Campus Master Plan** **extends only to the** **UCF MAIN CAMPUS**



Format – Goals, Objectives & Policies

GOALS, OBJECTIVES & POLICIES

GOAL 1: The long-term end toward which programs or activities are ultimately directed.

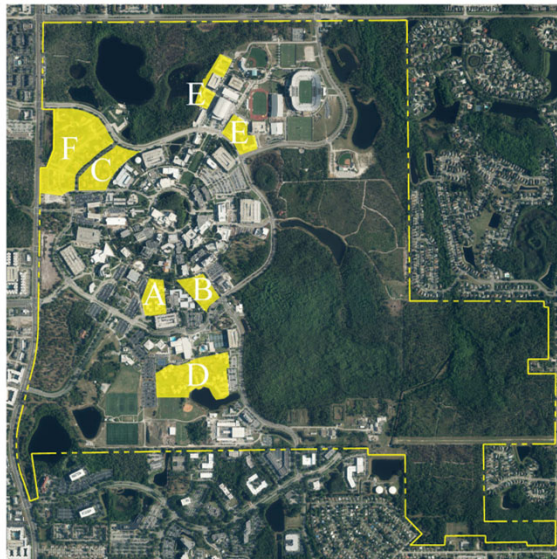
OBJECTIVE 1.1: A specific, measurable, intermediate end that is achievable and marks progress toward a goal.

POLICY 1.1.1: The way in which programs and activities are conducted to achieve an identified goal.

POLICY 1.1.2: More ways by which to achieve the goal.

Format – Maps.....Data and Analysis

Figure 3.4-1
Existing On-Campus
Housing Map



3.0 HOUSING

On-Campus Housing Complexes

- A. Apollo Community
- B. Libra Community
- C. Lake Claire Community Apartments
- D. Academic Villages
- E. The Towers at Knights Plaza
- F. Greek Park

- The Towers at Knights Plaza

Managed and Affiliated Housing

ADA Compliance

3.0 HOUSING

group study rooms, a grab-and-go food store, a mail center, a large outdoor patio space with wireless internet, and offices for residence life staff, an academic advisor, and a counselor.

The Towers, four seven-story buildings with a combined design capacity of 2,004 student spaces, was constructed in three phases, opening in 2006, 2007, and 2008 respectively. Students may choose from a combination of 4 bedroom / 2 bath, 4 bedroom / 4 bath, and 1 bedroom / 1 bath apartments. All bedrooms are single occupancy. Small study lounges are included on six (6) of the seven (7) floors. The ground floor lobbies, and adjacent courtyards provide student programming space for educational and social events.

UCF manages, or affiliates with, properties located off-campus including NorthView, which serves the main campus.

When all UCF-owned and -managed facilities have reached full capacity, students are referred to University-affiliated housing. Affiliated properties include Knights Circle, The Pointe at Central, and Union West on the Downtown Campus. Residence Life services are provided at each affiliated complex by the incumbent property management firm(s), and the UCF Police Department provides services at Knights Circle, The Pointe at Central, and the Downtown Campus including UnionWest.

UCF Housing complies with ADA Accessibility Guidelines (ADAAG) throughout the building inventory.

Housing Inventory

Beds on the Main Campus



Community	Building	Type	Beds
APOLLO COMMUNITY			
	Lake Hall	Suite	108
	Osceola Hall	Suite	103
	Polk Hall	Suite	108
	Volusia Hall	Suite	108
APOLLO Total Beds			427
LIBRA COMMUNITY			
	Brevard Hall	Suite	121
	Orange Hall	Suite	156
	Seminole Hall	Suite	162
	Citrus Hall	Suite	116
	Summit Hall	Suite	232
	Flagler Hall	Suite	232
LIBRA Total Beds			1,019

Element Leaders

UCF 2025-35 Campus Master Plan Update - Element Teams (updated 3/26/24)

2025-35 CMP STEERING COMMITTEE	Chair: Jon Varnell, VP Admin Ops <ul style="list-style-type: none"> Jon Bates, AVP Real Estate & Space Admin (RESA) Ben Davis, AVP Planning, Design & Const. (PDC) Jennifer Elliot, Director Arboretum & Sustainability Bill Martin, University Architect, PDC Duane Siemen, AVP UES 	<ul style="list-style-type: none"> Kevin Sowers, AVP Auxiliary Services Justin Wisor, AVP Facilities Operations (FO) SGA Student Body President¹ (Brandon Greenaway 2023-24) Susan Hutson, Mgr. of Campus Planning, PDC
Element	Core Committee (3-5 persons)	Advisory Resources
1.0 FUTURE LAND USE BOG 201.204	Chair: Bill Martin, PDC <ul style="list-style-type: none"> Jon Bates, AVP RESA Jen Elliott, Director Arboretum & Sustainability Duane Siemen, AVP UES Justin Wisor, AVP FO 	<ul style="list-style-type: none"> Susan Hutson, PDC UMPC Chair (Michelle Dusseau, COS, 2023-24) SGA Student Body President (Brandon Greenaway 2023-24)
2.0 TRANSPORTATION BOG 201.205	Chair: Kevin Sowers, AVP Aux. Services <ul style="list-style-type: none"> Jon Bates, AVP RESA Louann Huynh, Director Parking & Transportation Anand Rampersad, Asst Dir Parking & Transportation Terry Wheeler, Chair Parking & Transp. Committee James Mangan, UCF PD 	<ul style="list-style-type: none"> Susan Hutson, PDC Hatem Abou-Senna, PE, CECS Faculty RJ Mueller, UCFIT & Cycling Advocate SGA Safety & Transportation Coord. (Christina Cabrera 2023-24)²
3.0 HOUSING BOG 201.206	Chair: Chris MacDonald, AVP Housing & Res Life <ul style="list-style-type: none"> Jon Bates, AVP RESA Peter Mitchell, Dir Housing Admin & Finance 	<ul style="list-style-type: none"> Meredith Varner, HRL Richard Berwanger, HRL Susan Hutson, PDC SGA Director of Student Affairs (Brianna Urea 2023-24)
4.0 GENERAL INFRASTRUCTURE BOG 21.207	Chair: Duane Siemen, AVP UES <ul style="list-style-type: none"> Alex Parlato, UES Michael Scruggs, AVP UCF IT, Deputy CIO/CTO Justin Wisor, AVP FO 	<ul style="list-style-type: none"> Susan Hutson, PDC Amanda Lindsay, UES
5.0 CONSERVATION BOG 21.208	Chair: Jen Elliott, Director Arboretum & Sustainability <ul style="list-style-type: none"> Alex Parlato, UES Travis Simmons, Director LNR Justin Wisor, AVP FO 	<ul style="list-style-type: none"> Susan Hutson, PDC Jack Stout, Emeritus Faculty, Biology John Guziejka, LNR Amanda Lindsay, UES
6.0 RECREATION & OPEN SPACE BOG 21.209	Chair: Gary Cahen, Rec & Wellness Cntr <ul style="list-style-type: none"> Jen Elliott, Dir. Arboretum & Sustainability David Hansen, Sr Exec Assc Athl. Dir & COO 	<ul style="list-style-type: none"> Susan Hutson, PDC Justin Wisor, AVP FO Chris MacDonald, AVP Housing & Res Life Heather Marshall, RWC James Wilkening, Exec.Dir. Rec & Wellness Cntr
7.0 INTERGOVERNMENTAL COORDINATION BOG 21.210	Chair: Fred Kittinger, Sr AVP Govt & Comm Relations <ul style="list-style-type: none"> Jon Bates, AVP RESA Bill Self, AD Undergraduate Affairs 	<ul style="list-style-type: none"> Janet Owen, VP Govt & Community Relations Susan Hutson, PDC SGA Gov. Affairs Coord. (Brooke Martin 2023-24) Austin Wilson, Intern, Govt & Comm Relations
8.0 CAPITAL IMPROVEMENTS BOG 21.211	Chair: Ben Davis, AVP PDC <ul style="list-style-type: none"> Bill Martin, PDC Duane Siemen, AVP UES Justin Wisor, AVP FO Jon Bates, AVP RESA 	<ul style="list-style-type: none"> Susan Hutson, PDC Chuck Reilly, Academic Affairs Winston Schoenfeld, Office of Research Adrienne Frame, Student Success and Well-Being
OTHER		
SUSTAINABILITY BOG 21.202 (f) (e) 3	Chair: Jen Elliot, Dir. Arboretum & Sustainability <ul style="list-style-type: none"> Ryan Chabot, Sustainability Coordinator Alex Parlato, UES 	<ul style="list-style-type: none"> SGA Sustainability & Innovation Coordinator (Sydni Burge 2023-24) Susan Hutson, PDC
PRIMARY CONSULTANT³ CORGAN corgan.com Team: Carissa Oyedele Benjamin Patterson Others	1.0 FUTURE LAND USE CONSULTANT GAI Consultants gaiconsultants.com Team: A. Blake Drury Peter Sechler Others	2.0 TRANSPORTATION CONSULTANT VHB (Vanasse Hangen Brustlin) vhb.com Team: Joedel Zaballero Ryan Wenger Others
EVALUATION & APPRAISAL REPORT (EAR) BOG 21.202(7)	<ul style="list-style-type: none"> Bill Martin, University Architect, PDC Susan Hutson, PDC 	
INTRODUCTION	<ul style="list-style-type: none"> Bill Martin, University Architect, PDC Susan Hutson, PDC 	

[ACADEMICS](#)[ADMISSIONS](#)[RESEARCH](#)[LOCATIONS](#)[STUDENT LIFE](#)[ALUMNI & GIVING](#)[ATHLETICS](#)[APPLY NOW](#)[5-YEAR STRATEGIC PLAN](#)

UNLEASHING POTENTIAL

Amplifying the power of knowledge and discovery, the University of Central Florida unleashes the potential of our students, faculty, staff, and community. As a next-generation public research institute, we are an inclusive community of thinkers, doers, creators, innovators, healers, and leaders striving to shape the future and solve the world's most challenging problems.



An aerial site plan of a campus or park area. The plan shows various buildings, some of which are highlighted in yellow. There are also green spaces, trees, and a small blue pond. A white rectangular box with a black border is centered over the plan, containing the text "Content Updates".

Content Updates

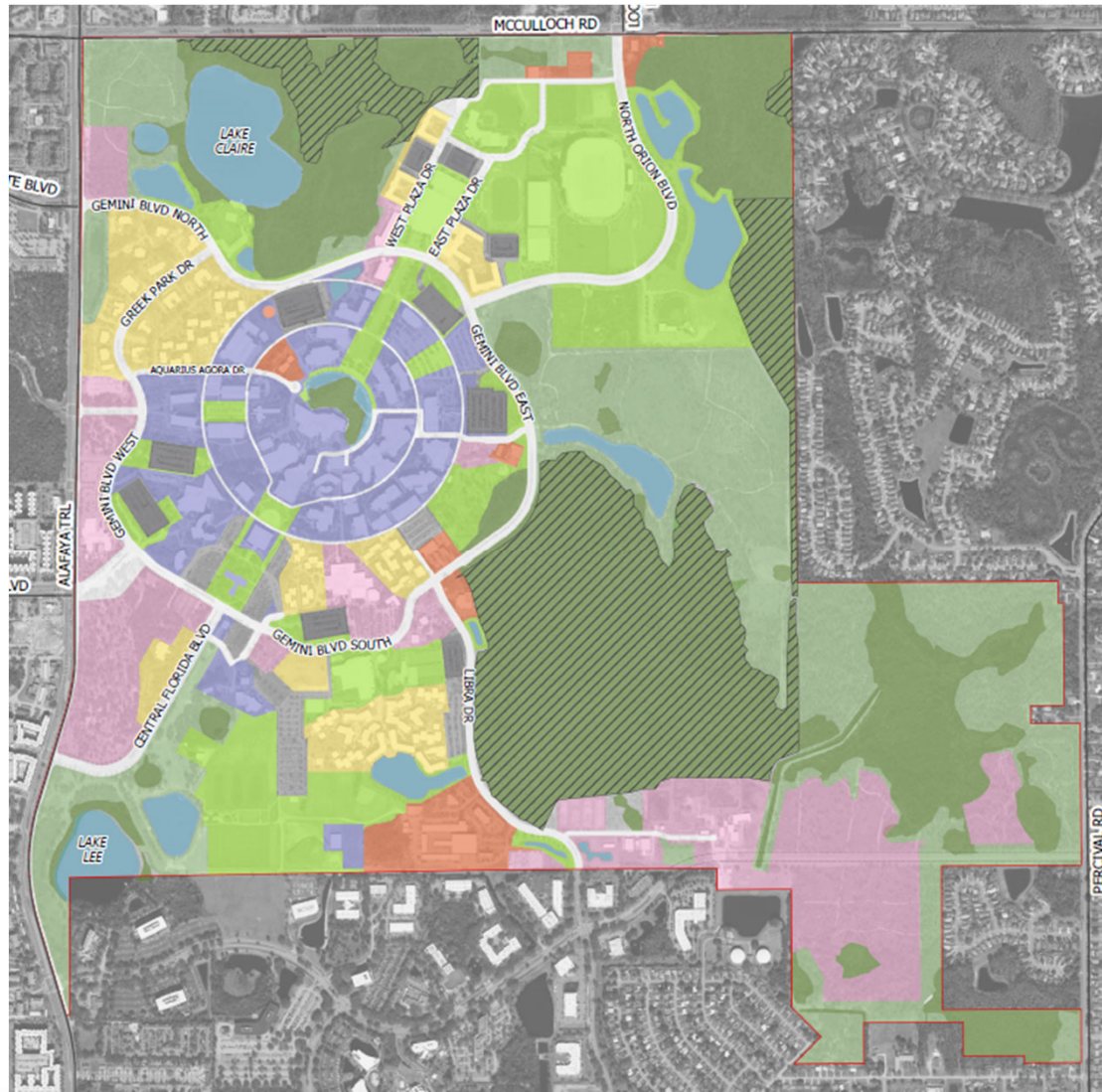
Future Land Use

- Minor content edits to Goals, Objectives and Policies
- Many changes to the Future Land Use Map, see the following slides



CMP 2025-35

Future Land Use Map



Legend

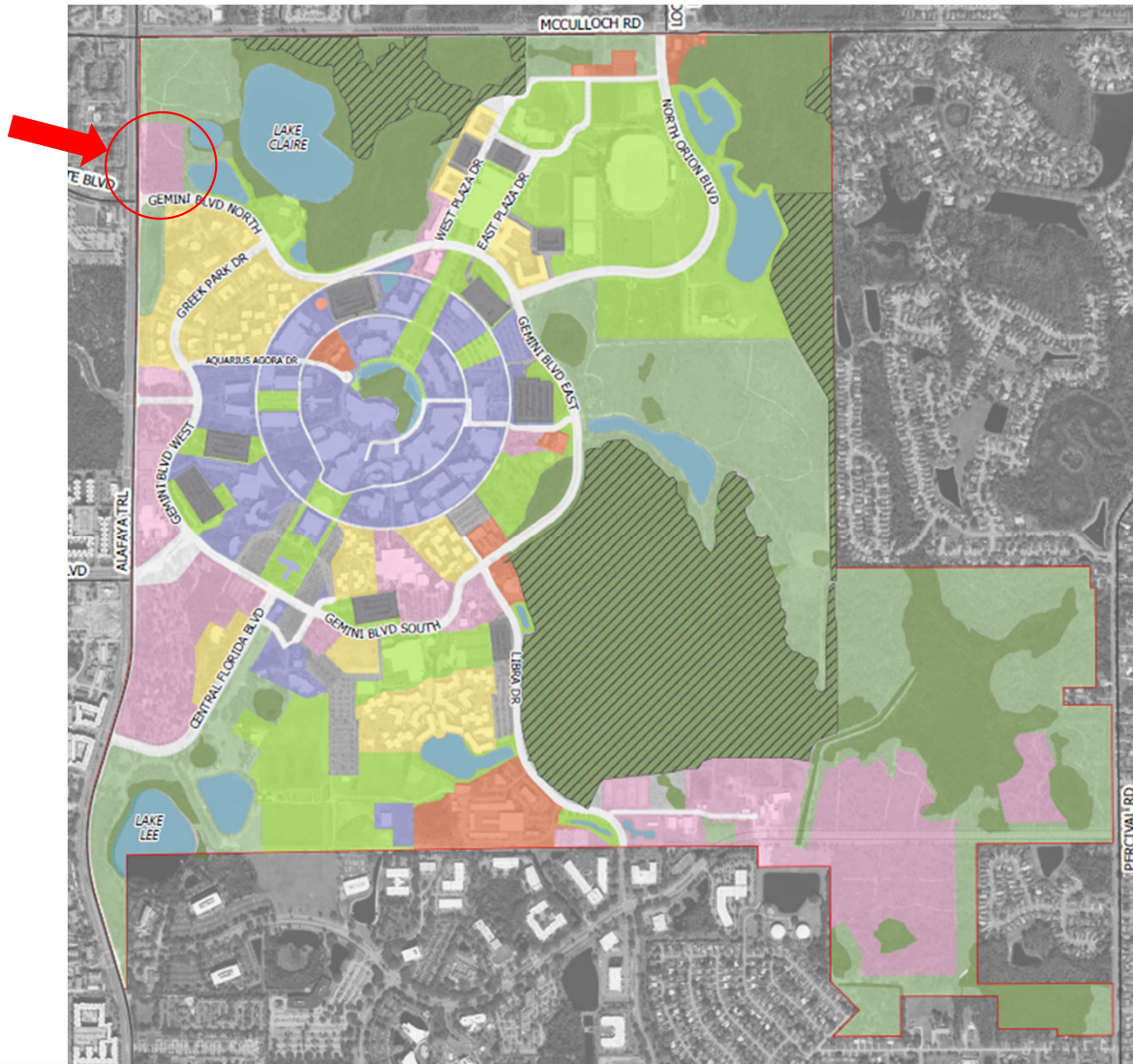
Future Land Use Categories

- Framework Streets and Connections
- Academic and Student Support Uses
- Mixed Use
- Parking
- Recreation and Open Space - Developed
- Recreation and Open Space - Natural Preserve
- Conservation - Wetlands
- Conservation - Easements
- Residential
- Non-Academic Support Uses
- Water Body

Legend Updates

CMP 2025-35

Future Land Use Map



Legend

Future Land Use Categories

- Framework Streets and Connections
- Academic and Student Support Uses
- Mixed Use
- Parking
- Recreation and Open Space - Developed
- Recreation and Open Space - Natural Preserve
- Conservation - Wetlands
- Conservation - Easements
- Residential
- Non-Academic Support Uses
- Water Body

Residential changed to Mixed Use

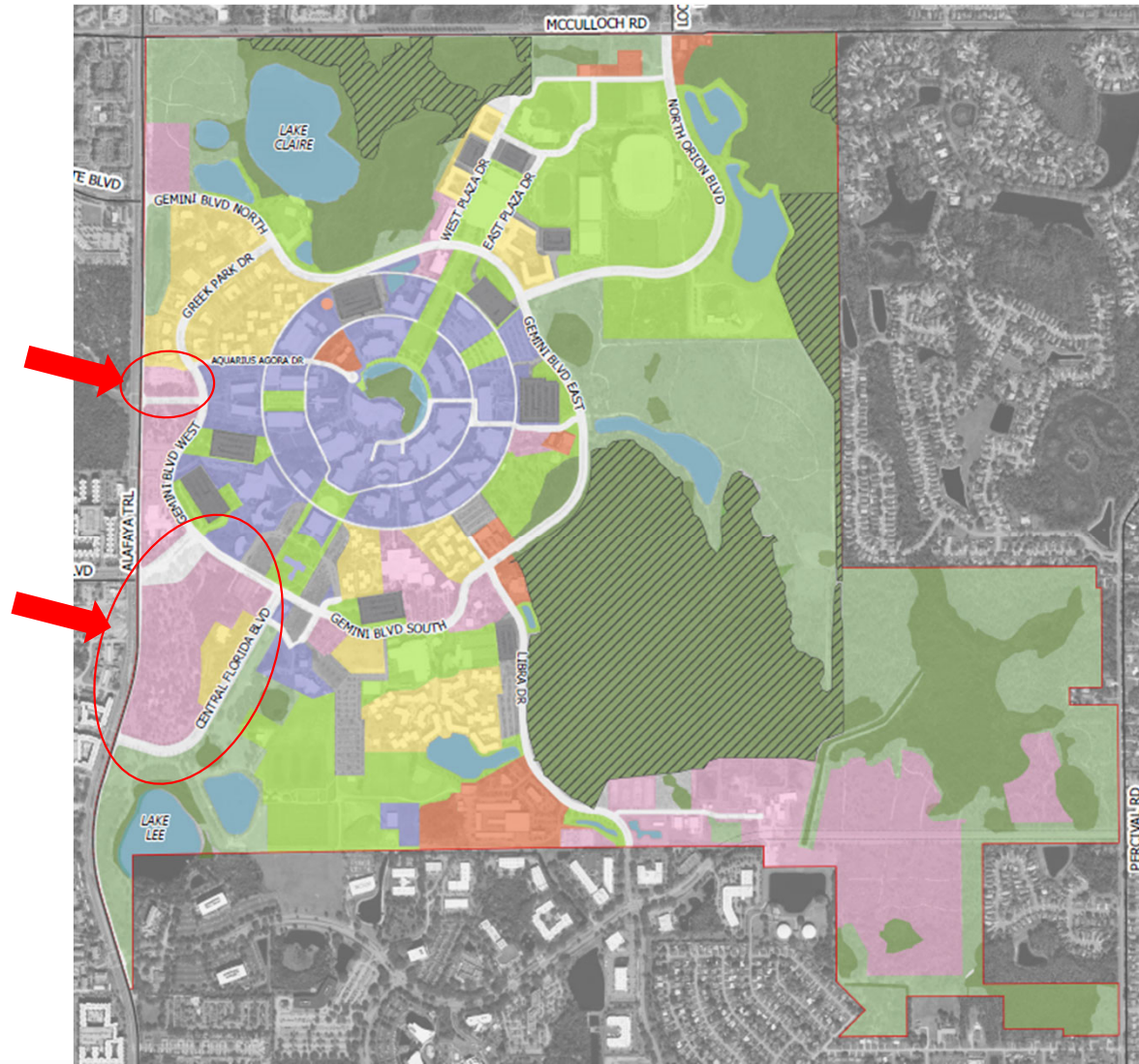
CMP 2025-35

Future Land Use Map

Legend

Future Land Use Categories

- Framework Streets and Connections
- Academic and Student Support Uses
- Mixed Use
- Parking
- Recreation and Open Space - Developed
- Recreation and Open Space - Natural Preserve
- Conservation - Wetlands
- Conservation - Easements
- Residential
- Non-Academic Support Uses
- Water Body



Rec & Open Space changed to Mixed Use

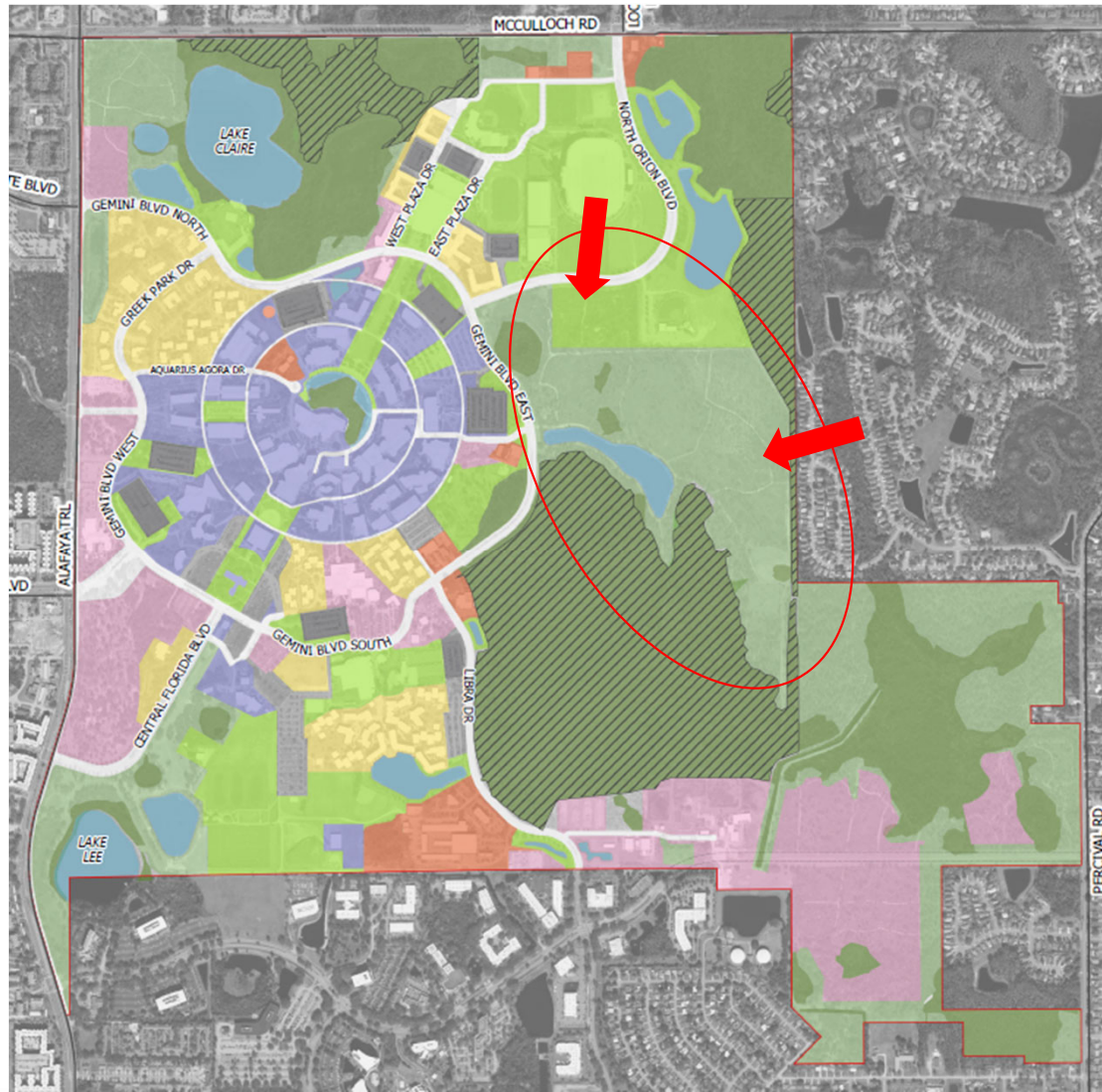
CMP 2025-35

Future Land Use Map

Legend

Future Land Use Categories

- Framework Streets and Connections
- Academic and Student Support Uses
- Mixed Use
- Parking
- Recreation and Open Space - Developed
- Recreation and Open Space - Natural Preserve
- Conservation - Wetlands
- Conservation - Easements
- Residential
- Non-Academic Support Uses
- Water Body



Expanded Rec & Open Space for Athletics

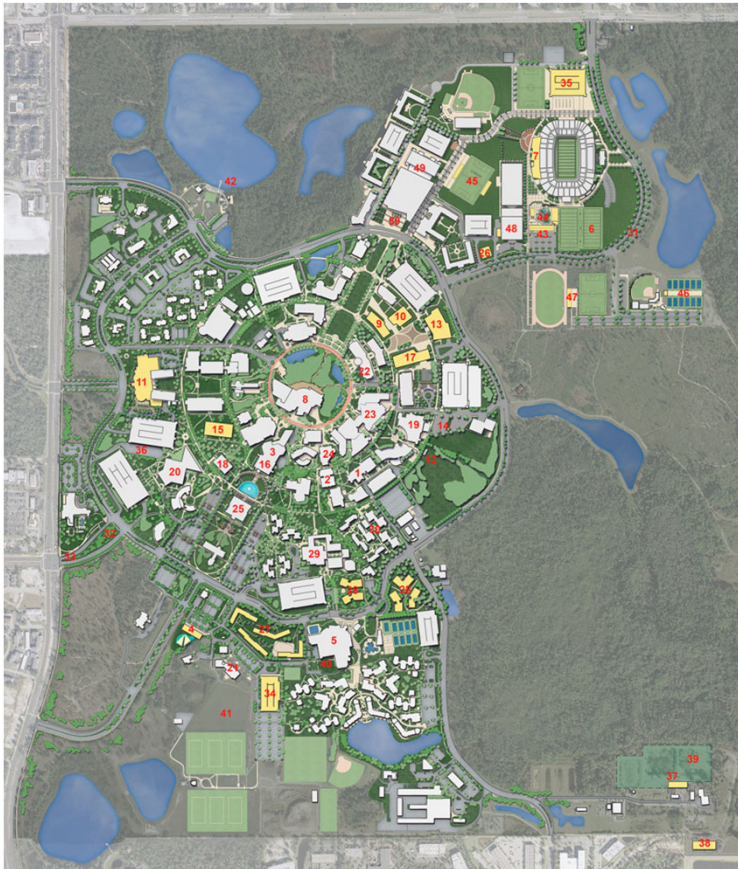
Mixed Use changed to Rec & Open Space – Natural Preserve



Capital Improvements

- Removed Implementation Section
- Reorganized Goals & Policies:
 - Goal 1 – focused on facility needs and growth
 - Goal 2 – focused on funding
 - Goal 3 – focused on sustainability & resilience
- Evaluates the need for public facilities as identified in other campus master plan elements
- Schedule of Capital Projects (SCP) lists projects over \$4M anticipated within the next 10 years;
- Capital Improvements Map shows potential building locations

Capital Improvements Map



Schedule of Capital Projects

Exhibit 8.4-1 Rev. Nov 2024
10-Year Schedule of Capital Projects (SCP)

MAP KEYS correspond with projects shown on 8.4-2 CAPITAL IMPROVEMENTS MAP		Campus	Bldg. #	Project Type	Recommendation	FCI	GSF	PROJECT SCOPE - Variables such as priority, cost, and timing are recorded annually on the 5-year Capital Improvement Plan		
ALL CAMPUSES MAP KEY		3-YEAR COMMITTED PROJECTS								
MAIN CAMPUS		1	Biological Sciences	Main 0001	0020	Renov/Remod	2021 EPS	116,607	In Construction	
		2	Chemistry Building	Main 0001	0005	Renov/Remod	2021 EPS	49,073	In Construction	
		3	John C Hitt Library (aka 21 st Century Library)	Main 0001	0002	Renov/Remod	CITF 2023 CPCC 2024		Ph 2B in construction. Future Ph to be designed.	
		4	(New) Creative School for Children	Main 0001	0167	New	CITF 2024	14,678	Replace Creative School for Children on new site	
		5	Recreation & Wellness Center	Main 0001	0088	Reno	CITF 2024	156,111	HVAC Systems	
		6	Football Practice Field Relocation	Main 0001	NA	Sitework		NA	Clears site for Football Ops Building & McNamara Cove	
		7	Roth Tower at FBC Mortgage Stadium	Main 0001	0135	New / Renov.		NA	In Design/Construction	
		8	Student Union	Main 0001	0052	Renov/Remod	CITF 2025	63,900 of 161,755		
OTHER CAMPUSES		No Key	Dr. Phillips Nursing Pavilion (aka College of Nursing Building)	AHSC Site 0016	1003	New	2020-30 SCP	NA	90,000	In Construction
		No Key	Rosen Main Building	RCHM Site 0015	0903	Renov/Remod		158,980	Remodeling for greater space efficiency. Funded \$12.8M	
MAIN CAMPUS		PROJECTS CONSISTENT WITH THE CAMPUS DEVELOPMENT AGREEMENT								
		No Key	McCulloch Road Improvements	Main 0001			2020 CDA		Orange Co. Provide mid-block crossing at Northgate Circle UCF. Pedestrian Trail from said mid-block crossing to West Plaza Dr UCF to develop an on-campus bicycle pathway linking existing trail systems of Orange Co. and Seminole Co.	
		No Key	Cross-Campus Bike Path	Main 0001			2020 CDA			
MAIN CAMPUS MAP KEY		10-YEAR PROJECTED PROJECTS								
ACADEMIC & STUDENT SUPPORT FACILITIES		9	Research II	Main 0001	166	New Bldg.	2021 EPS CPCC 2024	-105,060	Research labs and cleanrooms with supporting office space.	
		10	Workforce Entrepreneurship Resource eXchange (WERX) (aka Advanced Workforce Entrepreneurship Cntr, Learning Laboratory, Discovery & Innovation Hub)	Main 0001	155	New Bldg.	2021 EPS CPCC 2024	-100,000	Multidisciplinary classroom, teaching lab, and maker space building. Includes incubator and industry research/collaboration spaces.	
		11	Performance, Immersive Experience & Entertainment Laboratory - PIXEL (aka Performing Arts Complex Phase II)	Main 0001	0119 P	Addition to 0119	2021 EPS CPCC 2024	-100,000	Flexible performance space w/ multiple venues, assembly and production support spaces	
		12	Arboretum & Sustainability Center	Main 0001	TBD	New Bldg.	2020-30 SCP	-15,000	New Center replaces aging Arboretum modular	
		13	Space Technology and Aerospace Research (STAR)	Main 0001	TBD	New Bldg.	CPCC 2024	-140,000	Space research labs and classrooms focused on programs such as propulsion, space MedEd, and planetary science.	
		14	i-Design Engineering Center	Main 0001	TBD	New Bldg.	CPCC 2024	-22,000		
		15	Academic Building	Main 0001	TBD	New Bldg.		TBD	Located in the greenfield site of former Colburn Hall	
		16	Student Success Center	Main 0001	TBD	TBD	CPCC 2024	TBD	Collocate student services, resources, and academic assistance	



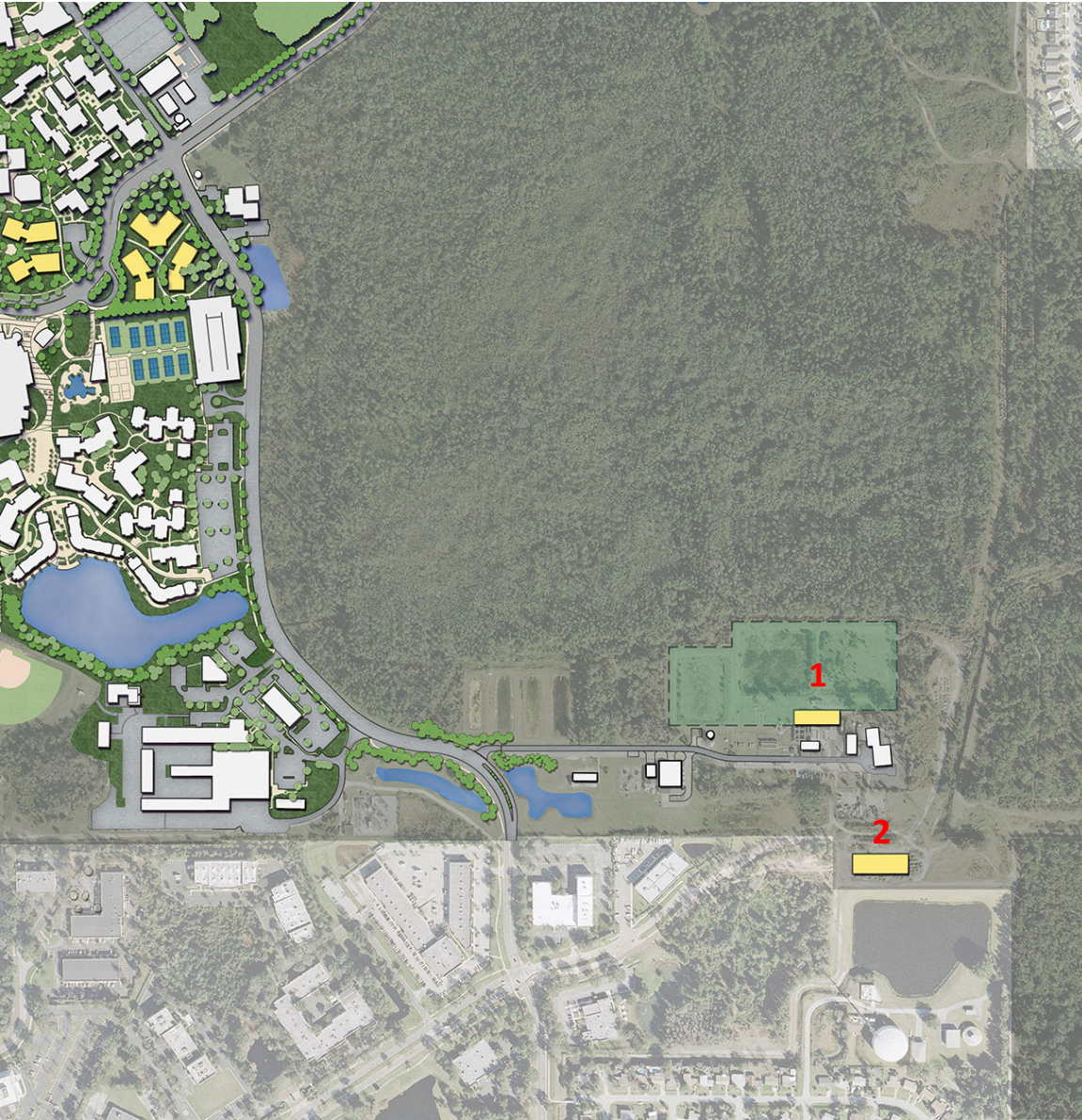
Capital Improvements Map

- 1 – Intercept Garage
- 2 - Football Tower
- 3 - Football Campus
- 4 – Track & Field Complex
- 5 – Sports Stadium/Field
- 6 – Tennis
- 7 – Multi-purpose
- 8 – Research II
- 9 – Workforce Entrepreneurship Resource
eXchange (WERX)
- 10 – Research III
- 11 – Space Technology and Aerospace
Research (STAR)



Capital Improvements Map

- 1 – Housing I
- 2 – Housing II
- 3 – Housing III
- 4 – Housing Garage
- 5 – Millican Parking/Landscape
- 6 – Main Entry Improvements
- 7 – Creative School
- 8 – Performance, Immersive Experience and Entertainment Laboratory (PIXEL)
- 9 – Academic Building



Capital Improvements Map

NON-ACADEMIC SUPPORT

1 – Water Treatment Plant

2 – Storage Building



Transportation

- Includes GOPs related to and for the provision of transit, auto circulation, parking, pedestrian and non-motorized vehicle facilities, sustainable transportation
- Evaluates modes of travel (bicycle, micromobility, pedestrian, transit, and motor vehicle) both on-campus and off-campus
- New Data and Analysis:
 - Documented the quantity and severity of vehicle and non-motorized crashes
 - Incorporated UCF's comprehensive lighting assessment
 - Created walking proximity map for campus and adjacent non-university land

Housing

- Policy updated to house a minimum of 75% of FTIC full-time enrolled students in support of retention and graduation efforts
- Potential locations for future housing:
 - West of the Recreation and Wellness Center on former Wayne Densch location.
 - West of Housing Administrative Building (existing surface parking lot)
 - Existing Creative School location
- Timing or phasing for renovation and remodeling of existing university-controlled housing facilities will be determined by Facility Conditions Assessments conducted during the element period





General Infrastructure

- Added Water policies regarding pending EPA regulations, monitoring raw water well quality, and prioritizing use of reclaimed water
- Addresses rising energy costs and initiatives to improve energy efficiency
- Addresses concurrency per state statute - the provision of adequate capacity for stormwater management, potable water, sanitary sewer and treatment, and solid waste facilities required to meet the future needs of the university
- Addresses concurrency per UCF guidelines – for chilled water, electrical power, natural gas, and telecommunications

Conservation

- No major changes to Introduction or Conservation of Natural Ecosystems and Resources
- Sustainability items highlighted in **green** throughout the document
- Added data about the use of the natural lands related to academic purposes



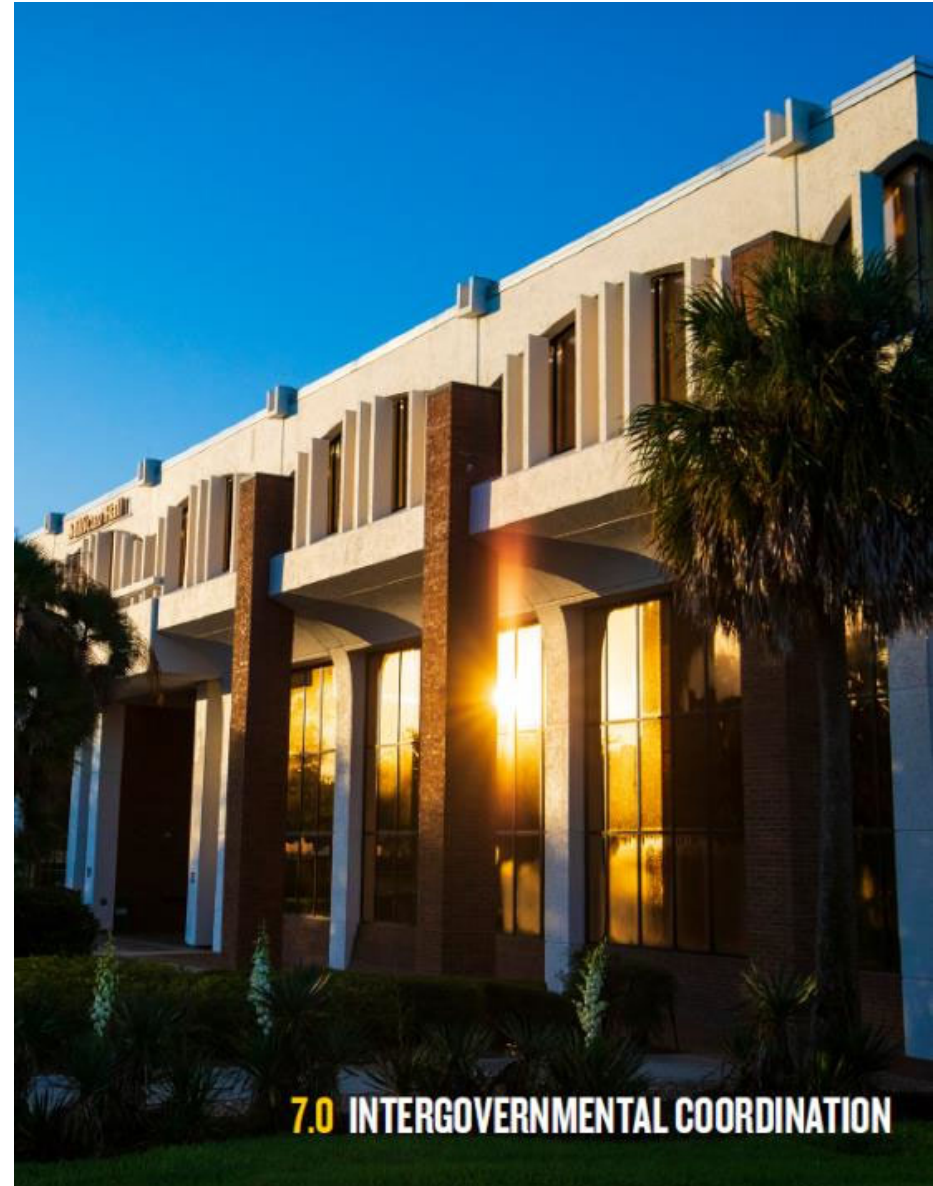


Recreation & Open Space

- Revised comparisons to peer institutions demonstrating need for additional recreation space, particularly with recent space reductions
- Describe priorities for future planning to expand RWC Park and Lake Claire. Noted upcoming CITF funding for capital improvements to RWC HVAC system and Lake Claire boat house
- UCF Athletics is committed to making the Kenneth G. Dixon Athletics Village the best of its kind in collegiate athletics, to include significant expansion during this planning period as funding becomes available

Intergovernmental Coordination

- No content changes, minor language refinements.
- Promotes land use compatibility between UCF and our host local government, Orange County.
- Identifies and resolves goals, objectives, policies and development proposed in campus master plans that may need coordination with adjacent local governments, and regional and state agency plans.



Review Agencies

- **Orange County (Host Local Government)**
- Seminole County
- City of Orlando
- City of Oviedo
- St. Johns River Water Management District (SJRWMD)
- East Central Florida Regional Planning Council (ECFRCP)
- Florida Department of Environmental Protection (FDEP)
- Florida Department of Transportation (FDOT)
- Florida Department of State (FDOS)
- Florida Department of Commerce (FloridaCommerce)
- Florida Fish and Wildlife Conservation Commission (FWC)

Summary of Comments

Governments	
Orange County (Host Local Government)	
Environmental Protection Division	8 comments
Transportation Planning Division	2 comments
Office of Sustainability and Resilience	36 comments
Planning Division	1 comment
Neighborhood Services Division	no comments
Building Safety	no comments
Fiscal and Business Services	no comments
Housing and Community Development	no comments
Orange County Fire Rescue	no comments
Parks and Recreation	no comments
Public Works Engineering	no comments
Orange County Sheriff's Office	no comments
Seminole County	3 comments
City of Orlando	no comments
City of Oviedo	no comments

State Agencies	
FloridaCommerce	5 comments
Division of Historical Resources	2 comments
Department of Transportation	3 comments
Department of Environmental Protection	no comments
Florida Fish and Wildlife Conservation Commis	no comments
St Johns River Water Management District	no comments
East Central Florida Regional Planning Council	no response

Courtesy Review	
MetroPlan Orlando	no response
Orange County Board of County Commissioner	1 comment

Public Participation	
Kaekanna Gintoli	1 comment
Jaci Lim	1 comment
Natalya McKay	1 comment
Anna Wazny	1 comment

Schedule

COMPLETED

- ELEMENT TEAMS INCLUDED STUDENT GOVERNMENT REPRESENTATIVES
- ELEMENT DRAFTS - COMPLETED MAY 1
- OPEN HOUSE – MAY 29
- PDC INTERNAL REVIEW - COMPLETED JULY 1
- FIRST PUBLIC HEARING – JULY 23
- MANDATORY 90 DAY REVIEW – AUGUST 1 TO OCTOBER 30
- REFINE DOCUMENT, INCLUDE IN BOT MATERIALS – 1ST WEEK OF NOVEMBER

NEXT STEPS

- **SECOND PUBLIC HEARING, BOT ADOPTION – DECEMBER 5**
- **NOTIFY AGENCIES AND AFFECTED PERSONS OF ADOPTION**
- **30 DAY CHALLENGE PERIOD FOR THOSE WHO SUBMITTED COMMENTS**
- **CAMPUS DEVELOPMENT AGREEMENT W/ ORANGE COUNTY**

Rules of Order / Public Comment Process

1. All speakers must complete a comment card and sign the speaker roster.
2. All speakers must be signed in prior to the start of the public comment period.
3. Each speaker will be given three (3) minutes.
4. When presenting, state your name, address, and affiliation before beginning your comment.